

PW MILLAR LTD

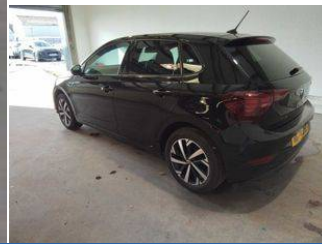
ESTABLISHED 1970

2024-74 | **VOLKSWAGEN POLO**

1.0 TSI Match Euro 6 (s/s) 5dr | Petrol | Manual |
Deep Black



<https://www.pwmillarford.co.uk>
01446 733248



£16,199

From **£286** per month PCP

Mileage	14,818 miles
Fuel	Petrol
Engine	1 litre
Transmission	Manual
Gears	5
Insurance group	11E

SPECIFICATIONS

Hill start assist	Bluetooth mobile phone interface	Rear windscreen washer and wiper with interval delay
Isofix child seat preparation easy-fit (for two outer rear seats, and front passenger seat) compatible with I-size	Carpet mats pack - Polo	Front wheel drive
Lava stone black gloss/matt decorative inserts in dash and front door panels	Anti-theft wheel bolts	DAB Digital radio
Low rolling resistance tyres	Front assist with autonomous emergency braking (for Adaptive Cruise Control ACC up to 130 mph)	Preparation for We connect and We connect plus
Rear electric windows	Leather trimmed gear knob	Light and vision pack - Polo
Start-stop system with battery regeneration (recuperation - energy recovery during braking)	Central locking system with SAFELock, radio remote control + 2 remote control folding keys	Front and rear 6 speakers
16" Torsby alloy wheels	3 point height adj front seatbelts + pretensioners	Warning signal and warning light for front and rear seatbelts not fastened
LED rear combination lamps	Carpet mats, front and rear	Rear shock absorpion
Anti-theft alarm system with interior monitoring, backup horn, and towing protection	Diversity antenna for FM reception	Tyre mobility kit including compressor and sealing foam. In lieu of spare wheel

TECHNICAL

Performance	
0-100 kmh (62 mph)	10.8 s
Top speed	117 mph
Fuel Consumption Ice	
MPG (combined)	55.4 mpg
L/100km (combined)	5.1 l/100km
Capacities	
Boot (seats up)	351 litres
Boot (seats down)	1125 litres
Fuel tank	40 litres
General	
NCAP Overall	5

....MORE.... For the full details please call us or scan the QR code above

01446 733248

sales@pwmillar.co.uk

P W Millar 148 Port Road East Barry South Glamorgan CF62 9PZ

Whilst every effort has been made to ensure the accuracy of the vehicle specification, some inaccuracies may occasionally occur. It is important that you do not rely solely on this information, but check with a member of the sales staff about any features which may affect your decision to buy the car.